



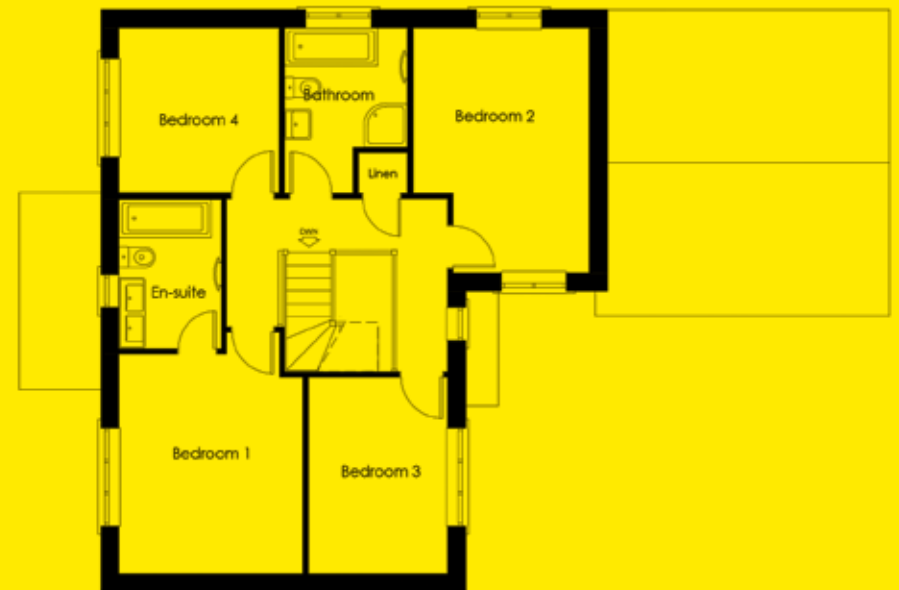
Conroy Brook (Developments) Ltd

For more information contact  
Jonathan Bailey 07748 783070  
jon @ conroybrook.co.uk



Fairfield House, Hollowgate, Holmfirth HD9 2DG  
Tel: 01484 689689  
Email: holmfirth@simonblyth.co.uk

# House Type D Plots 7 & 10



## GROUND FLOOR PLAN

Lounge	3.60 x 6.10m	11' 8" x 20' 0"
Family living and dining	3.00 x 4.40m	9' 10" x 14' 5"
Kitchen	3.25 x 4.40m	10' 8" x 14' 5"
Hall	3.00 x 3.00m	9' 10" x 9' 10"
Cloaks	1.45 x 1.60m	4' 9" x 5' 3"
Study	2.75 x 2.50m	9' 0" x 8' 2"
Utility Area	1.70 x 4.20m	5' 7" x 13' 9"

## FIRST FLOOR PLAN

Bedroom 1	4.06 x 3.42m	13' 4" x 11' 2"
Bedroom 2	4.50 x 3.31m	14' 9" x 10' 10"
Bedroom 3	3.64 x 2.61m	11' 11" x 8' 7"
Bedroom 4	3.08 x 2.98m	10' 1" x 9' 9"
Bathroom	3.08 x 2.27m	10' 1" x 7' 5"
Bed 1 En Suite	2.77 x 1.93m	9' 1" x 6' 4"
Linen	0.845 x 0.995m	2' 9" x 3' 3"
Gallery landing	3.15 x 3.00m	10' 4" x 9' 10"